

# Yoder Land Auction

**Thursday, May 8, 2025 - 6:00 pm**

**Location:** 27629 State Route 643, Coshocton, Ohio 43812

**Directions:** From New Bedford, take State Route 643 south to the auction

**29.6 Acres - 2 Parcels - Open & Wooded Land**  
**Nice Building Sites - Insulated Storage Barn**  
**Beautiful View - Keene Township - Coshocton County**



## **Here's a nice Opportunity to own Some Beautiful Land in the Country!!**

This is very nice parcel of land in the rolling hills of northern Coshocton County.

Included is approximately 16 acres open land, currently used for farming, and 13 acres of woods with a hunting blind, lots of deer, turkey, and other wildlife. There are several beautiful building sites on the land with gorgeous views! The insulated 10' x 16' storage barn is included.

Feel free to stop in, and walk the land at your convenience.

**Build or Invest in land only a short drive from New Bedford, Millersburg, and Coshocton!!**

### **Auctioneers/ Realtors**

**Allen Mast 330-600-0754**

**Orus Mast 330-473-9077**



**Orus**  
**Mast Auctions, LLC**  
**330-473-9077**



**BERKSHIRE HATHAWAY**  
HomeServices  
Stouffer Realty



**[www.NorthwoodAuctions.com](http://www.NorthwoodAuctions.com)**



# Yoder Land Auction

29.6 Acres - 2 Parcels - Open & Wooded Land

Nice Building Sites - Beautiful View

Insulated Storage Barn

Keene Township - Coshocton County

**Thursday, May 8, 2025**

- 6:00 pm -



  
Orus  
Mast Auctions, LLC  
330-473-9077

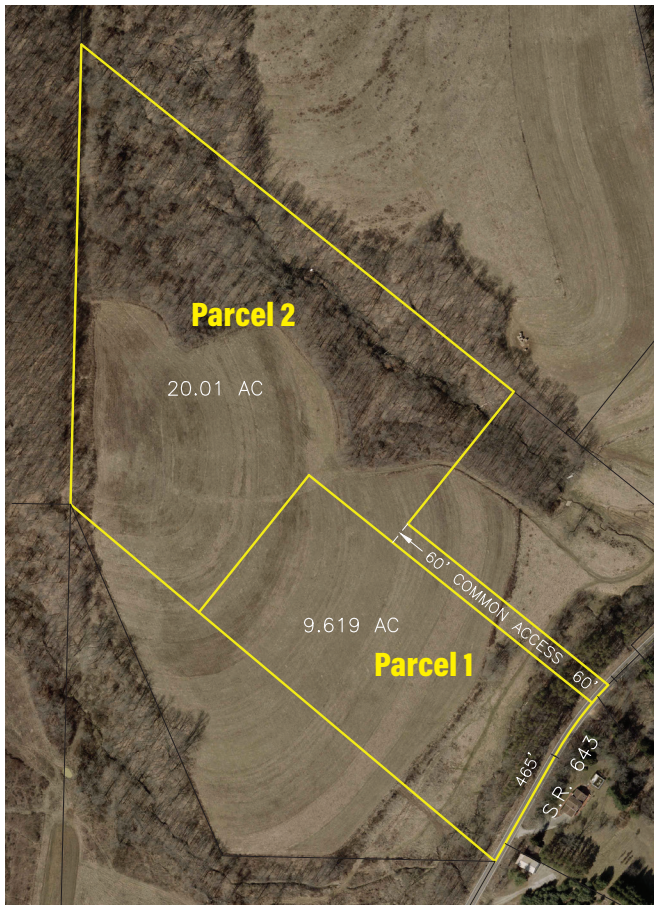
  
BERKSHIRE HATHAWAY  
HomeServices  
Stouffer Realty



8080 TR 669 Dundee, OH 44624

## COSHOCTON COUNTY LAND

29.6 Acres, 2 Parcels



Parcel #017-00001007-10

R.E. Taxes: \$123.53/Half Yr.

Owner:

Allen E. Yoder

Parcel Information:

Parcel #1: 9.61 Acres mostly open land

Parcel #2: 20.01 Acres open & wooded land  
The parcels will have a shared driveway (already installed)

### Real Estate Terms

A 10% nonrefundable down payment is due at the auction. The balance will be due at closing in approximately 45 days. The buyers will be charged \$700 per parcel for survey costs. Announcements at the auction precede previous statements and ads.

[www.NorthwoodAuctions.com](http://www.NorthwoodAuctions.com)