

# Miller Real Estate Auction

Tuesday, November 19, 2024 - 5:00 pm

*Open House Wednesday, November 6 • 3:30 - 5:30 pm*

**Location:** 7020 State Route 241 Millersburg, Ohio 44654.  
The property is located at the east edge of Benton on S.R. 241

**5 Bedroom Home - 2 Story Barn/Shop  
1.15 Acres - East Holmes Schools  
Saltcreek Township - Holmes County**



## **An Affordable property in Benton, Ohio.**

**The House** features a kitchen including an island and a dutch pantry, the living room, the bedroom, and a big bathroom on the main floor. There are 4 bedrooms and a half bath upstairs, plus a full walkout basement featuring a bright laundry room, a canned food room, and storage areas.

**The Barn/Shop** includes 4 boxstalls on the north end plus a nice storage area at the other end and a lot of storage and shop area on the second level.

Also included is a unique brick, round top fruit cellar built into the the hillside, a nice 12' x 24' storage building, an 8'x 12' storage barn, a chicken coop, a firewood shed, blackberries, raspberries, a nice back yard, and a creek. There is Northeast Ohio gas, a private well, and a septic on the property.

**If you are just starting out and don't want to pay rent, take a look at this property.**

### **Auctioneers/ Realtors**

**Orus Mast 330-473-9077**

**Allen Mast 330-600-0754**



**Orus  
Mast Auctions, LLC  
330-473-9077**



**BERKSHIRE HATHAWAY  
HomeServices  
Stouffer Realty**



**[www.NorthwoodAuctions.com](http://www.NorthwoodAuctions.com)**



# Miller

## Real Estate Auction

5 Bedroom Home - 2 Story Barn/Shop

1.15Acres - East Holmes Schools

Saltcreek Township - Holmes County

**Tuesday, November 19, 2024**

- 5:00 pm -



Orus Mast Auctions, LLC  
330-473-9077

BERKSHIRE HATHAWAY HomeServices  
Stouffer Realty

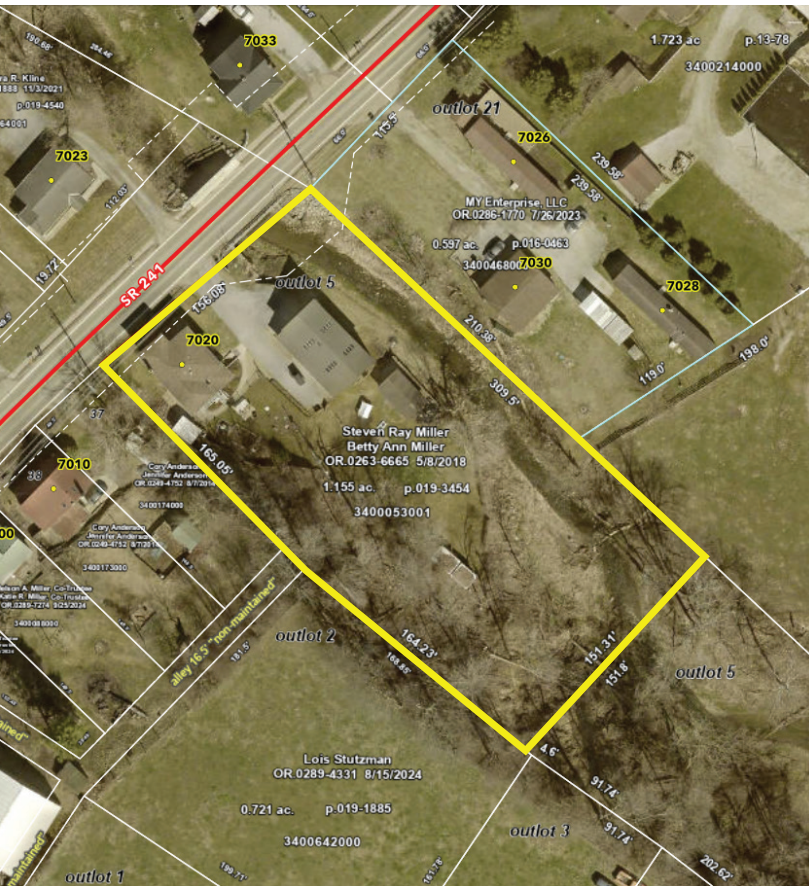
8080 TR 669 Dundee, OH 44624

**OPEN HOUSE**

Wednesday, November 6 - 3:30-5:30 PM

Orus Mast Auctions, LLC  
330-473-9077

BERKSHIRE HATHAWAY HomeServices  
Stouffer Realty



**Terms**

There is no buyer's premium. A 10% nonrefundable down payment is due at the auction. The balance will be due at closing in approximately 45 days. Announcements at the auction precede previous statements and ads.

**Owners:**  
Steven Ray & Betty Ann Miller

**Parcel #**3400053001  
**R.E. Taxes:** \$1183.02/half yr

[www.NorthwoodAuctions.com](http://www.NorthwoodAuctions.com)