

Yoder Land Auction

Wednesday, April 17, 2024 - 6:00 pm

Location: 32616 T.R. 21 Millersburg, Ohio 44654

Directions: From New Bedford take C.R. 12 to C.R. 126 to the right to T.R. 217 left to T.R. 127 left to the land.

16.9 Acres - 2 Parcels - Building Sites Open & Wooded Land - Creek Coshocton County - Millcreek Township

Here's your opportunity to purchase some nice country land in northern Coshocton County!

The land is a mixture of open & wooded land, a nice building site, and a creek (possible pond site) on a quiet township road. Feel free to stop by, pick up a brochure, and walk the land at your convenience.

If you are you looking to build, hunt, or invest some money, check out these 2 parcels!



Parcel Information:

Parcel 1: 8.5 acres open & wooded with a building.

Parcel 2: 8.4 acres open & wooded.

Owners: David J. & Betty Yoder

Terms

A 10% nonrefundable down payment is due at the auction. The balance will be due at closing in approximately 60 days. Buyers will be charged \$600 per parcel for survey costs. Announcements at the auction precede previous statements and ads.



Orus
Mast Auctions, LLC
330-473-9077



BERKSHIRE HATHAWAY
HomeServices
Stouffer Realty

Auctioneers/ Realtors
Orus Mast 330-473-9077
Allen Mast 330-600-0754

For more information visit www.NorthwoodAuctions.com

Yoder Land Auction

16.9 Acres • 2 Parcels • Building Sites
Open & Wooded Land • Creek

Wednesday, April 17, 2024

AUCTION TIME: 6:00 pm



Mast Auctions, LLC
330-473-9077

BERKSHIRE HATHAWAY
HomeServices
Stouffer Realty

8080 TR 669 Dundee, OH 44624



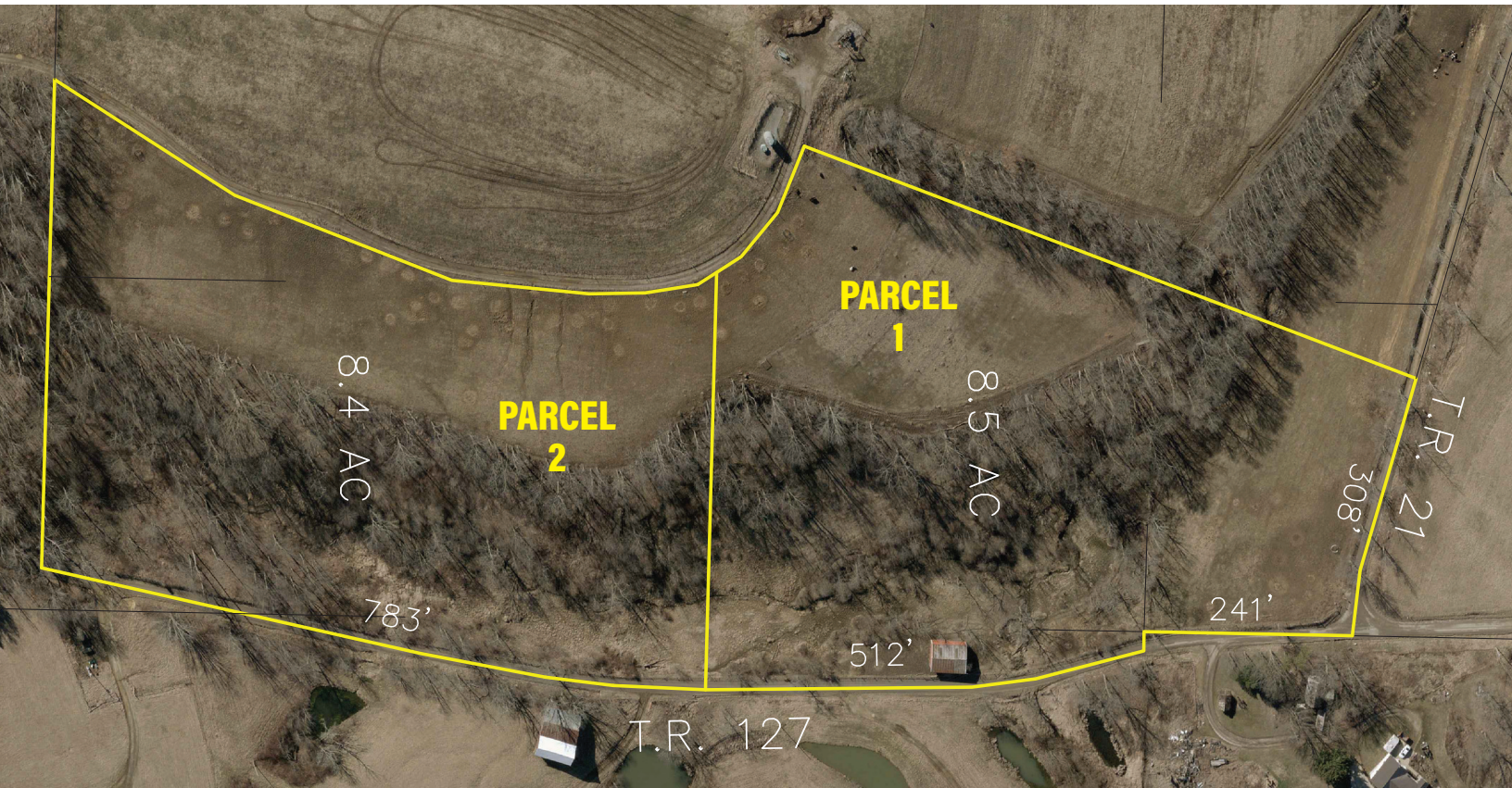
Auctioneers/Realtors

Orus Mast 330-473-9077 • Allen Mast 330-600-0754



Orus
Mast Auctions, LLC
330-473-9077

BERKSHIRE HATHAWAY
HomeServices
Stouffer Realty



Yoder Land Auction