

Yoder Land Auction

Thursday April 20, 2023 • 6:00 pm

Location: 30936 C. R. 126 Millersburg, OH 44654

Directions: From New Bedford, take C. R. 12 west to C. R. 126, turn right to the auction

**12.5 Acres • 3 Parcels • Beautiful Building Sites
Open & Wooded Land • Pond
Millcreek Township • Coshocton County • River View Schools**



If you are looking for land with **beautiful building sites and stunning hilltop views in a rural area** take time to stop by and inspect these 3 parcels. The land is mostly fenced pasture and has a small wooded area and a pond on parcel #3. Buy 1, 2, or 3 parcels and bring your building plans. Or, if you want an affordable tract of land with a pond for a weekend getaway and a solid investment not far from home, join us at the auction!! The

neighbor has the right to use the spring on Parcel #1. Please feel free to stop by, pick up a brochure, and inspect the parcels at your convenience.

Parcel Information

Parcel #1 = 4.243 Acres with a Beautiful building site

Parcel # 2 = 4.121 Acres with a Gorgeous view.

(Parcels 1 & 2 will have a common access driveway)

Parcel # 3 = 4.144 Acres Open & Wooded with a pond .

Terms:

A 10 % non refundable down payment is due at the auction. The balance will be due at closing in approximately 45 days. The buyers will be charged \$500 per parcel for survey. The property sells as is and subject to all articles of record. Announcements at the auction precede previous statements and ads.

Owners: Andrew N. & Emma Yoder

Parcel # 0230000032800

CAUV Real Estate taxes \$30.17/half year

Auctioneers/Realtors

Orus Mast 330-473-9077

Allen Mast 330-600-0754



330-473-9077

330-473-9077

BERKSHIRE HATHAWAY
HomeServices

Stouffer Realty



www.NorthwoodAuctions.com

Yoder

Land Auction

12.5 Acres, 3 Parcels, Beautiful Building Sites
Open & Wooded Land, Pond
Millcreek Twp., Coshocton County
River View Schools

Thursday April 20, 2023 • 6:00 pm

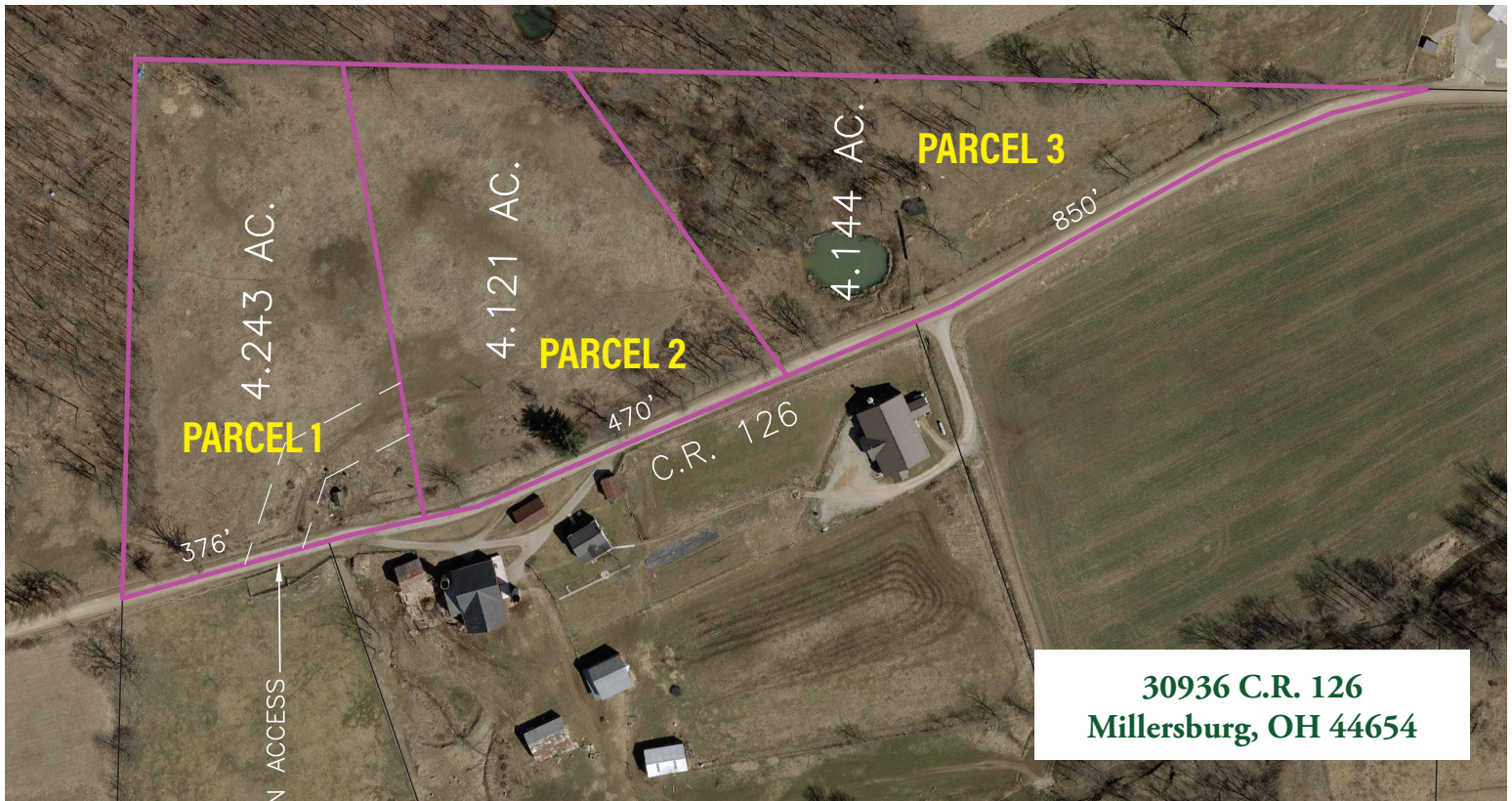


8080 TR 669 Dundee, OH 44624

Auctioneers/Realtors

Orus Mast 330-473-9077

Allen Mast 330-600-0754



Yoder Land Auction