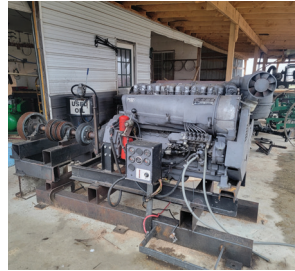


# Yoder Public Auction

Saturday April 15, 2023 • 9:00 AM | 6723 US Rt. 6 Pierpont, Ohio 44082

Horses - Farm Machinery - Guns - Ammunition - Sawmill Equipment - Shop Tools



**Horses** Team of 3 & 4 year old black Percheron geldings broke to all farm machinery, team of 2 yr. Old pulling bred ??, registered 1 yr old red sorrel Belgian ,sired by Orndorff's Mariah Dream dam is E.E.Y. Majesty Linda , back to Kory's Captain & Chickasaw's Master Prince, & a 1 yr. Old red sorrel gelding, sired by E.M. Charming Korry, dam is Winding Lane's Heidi, (a nice matching team), Reg. 3 yr. old Belgian gelding broke to all farm machinery sire Greene Meade Brock, dam Bass River Misee, 2 yr. old sorrel Belgian gelding, 3 yr. old red sorrel Belgian gelding, broke, 2 yr. old sorrel mare, (3) 1 yr. old Belgian stud colts, Reg. 13 yr. old Standardbred gelding, sire Andover Hall, dam Donnerail, 2 yr. old Morgan stud, 3 yr. old Standardbred gelding-green broke, Hackney pony- kid broke, miniature pony- kid broke,

**Cattle & Sheep** 1 Black Angus cow and 2 feeders, 3 yr. old Texel & Dorset cross ram .

**45 Pieces Farm Machinery** McD # 9 reg. gear 7' mower, rebuilt by Mast Mower Shop, Pioneer homesteader with 6 attachments, McD F-20 tractor on steel wheels, Plot Master 6' Rolo harrow, like new, RH Pioneer 2 bottom plow, LH single bottom Pioneer riding plow, LH Hostetler riding plow, N.H.#276 baler w/ super sweep N. H. #311 baler, N.H. #477 7' haybine, Grimm 7' tedder, N.H. #55 hay rake, McD silo filler. J.D. Big #4 mower, J.D. # 3 mower (both mowers are rebuilt), Pioneer forecart, Pioneer 6' blade, McD 6' grain binder, McD Pto corn binder, 3 aluminum corn binder elevators , 2 N.I. Manure spreaders, 2 flat bed wagons, 12' transport disk, 6' disk, J.D. manure spreader, fertilizer spreader with motor, (2) 4 row McD corn planters, (2) 2 row McD corn planters both with hoppers, 30' hay & grain elevator, Fahr RH40 4 spinner tedder, 8' 3 pt. chisel plow, 8' harrow, McD 13 hole grain drill,

**Farm Misc.** snow plow, plastic tub & round tub bale shredders with Honda engines, 3 ton grain bin, N.H. husker sheller, shoeing stocks, hyd. dump cart, 6'x10' cattle trailer, 6'x10' trailer, applicators, steel wheels, 2,3,&4 horse eveners, 2 milker buckets, 3 wagon loads of misc.

**Sawmill & Related Items** (Brand New) Timber Buddy push portable mill w/1-1/2" band & 31HP Vanguard w/electric start, Lister Petter 3 cylinder diesel, 2008 Deutz 6 cylinder 116 hp diesel 766 hours, Kohler 38 hp. gas engine, #271 Detroit Engine (runs), Meadows portable sawmill with hand dogs in good cond., 4"x30" custom edger, 2 slab saws, line shaft ready, hyd. slab saw, cant kickers, 5 T. crane, 20' 1 T. Wallace Gantry w/casters, cant sizer,

**Shop Tools** 5000 watt generator w/ Honda motor, 3000 watt inverter generator, 10 generators from 3500 to 7000 watts, 20 Honda motors from 3 to 20 horse h.p. (all out of the shop), 3 power washers, Lincoln 8 hp. 130 amp. welder w/a Kohler engine, 4 Paslode spikers, 25 roofing nailers, 3 air diaphragm pumps, air flooring nailers, misc. air tools, ice tongs, steel work benches, Dewalt & Milwaukee cordless tools, acetylene regulators, 3 wagon tool boxes, hand tools, Shindaiwa concrete saw, small torch set, 12 ton shop press, 6" belt sander, power trowel with Honda engine, twin tank air compressors, brill press lathe combo, electric lift table, socket sets, wrenches, banding tools, small concrete mixer, Troy Bilt chipper, 2 T. & 5 T hoists, mower knife sharpener, aluminum & fiberglass ladders, reel mowers, and lots more.

**Household & Collectibles** Air laundry spinner, lineshaft laundry spinner, rebuilt Maytag wringer washer, 20 qt. dough mixer, 6 cooling racks, 3 burner New Perfection oil stove, stove parts, grandfather clock, table top baker, new #32 meat grinders, Lumber Tiger hot water heater, 12' SS table with a sink, AMF #537 GoTrac. Peddle tractor, wooden planes and toolbox.

**25+Guns & Bows** Ruger American 6.5 Creedmoor 6 x24x50 scope, tripod, & muzzle break, DPMS Panther Arms Sweet 16, heavy BBL AR 15 w/ Red Dot scope, Honor model 1500, thumb hole stock, 22-250 varmint rifle, 6x20 scope, Winchester model 12, 12 ga. 30 in" barrel & a custom stock, Henry 45-70 single shot rifle, w/scope, Mossburg model 500 camo, 20 ga. rifled and pointed barrels, CVA 50 cal. Hawksens model muzzle loader, Mossburg 20 ga. over & under, Stoeger model 2000 12 ga w/ deer barrel , JTS 12 ga. Assent Shot gun, NIB, Marlin 45-70 lever action NIB, Marlin model 336 , 30-30 with Barska scope, Rossi 22 lever action NIB., GSG 22 Assault gun German made, Handi model SB2 45-70.

**Crossbows, compound bows and more hunting goods**

**Hand Guns** Ruger Mark II 22 cal. Stainless Target BBL., Sig model 238, 9mm green finish, Dan Wesson 41 mag custom grip in velvet case w/factory tool, Smith & Wesson 686 stainless 357 cal. 6" BBL in original box, Glock 43x 9mm 2 clips in the box, Taurus Magnum Judge Ultra lite 45-410 in original box, CVA Navy 44 pistol, Interarms stainless Virginian Dragon 357 cal., Rossi 357 mag stainless, Smith & Wesson model 629, 44 mag. 6 " BBL, Cobra model BBG380 380 caliber

**5,000 Rounds Ammunition** 350 rounds 12 ga. 2 3/4" target loads including Winchester, heavy game loads, trap loads and shot shells, Federal Premium buck shots, Herter's shot shells, lots of Federal & Hornady 12 ga. slugs, 500 rounds 45 cal. Including Federal, Remington, Winchester, Hornady, and Gold Dot, Remington & Hornady 41 cal., 23 boxes Remington, Hornady , Bronze & Gold Dot, 280 rounds 44 cal. mag. reloads, 140 rounds 22-250 cal. Win. & Hornady, 60 rds 450 Bush Master & Hornady, 5 boxes 25-06 cal. Fusion Hornady Winchester, 60 rounds 45-70 cal., 2 boxes 6.5cal. Creedmoor, 220 rounds 308 cal. Hornady, Remington Bronze, 300 rds. Hornady, Federal Premium, & Winchester, 1200 rounds Winchester, American Eagle, Rem. Federal Premium, & reloads, 900 rounds 7.62x 39 cal. Wolf Tulammo & Herter, and more.



**Sale Order:** 9:00 a.m., small items | 11:00 a.m., Guns | 12:00 noon, Shop tools, followed by Sawmill-related, Farm Machinery, Horses

**Terms: Cash or Good Check**  
**Lunch Stand by: Andover Amish School**  
**Owners: Urie & Esther Yoder**

**Auctioneers/ Realtors**  
**Orus Mast 330-473-9077**  
**Allen Mast 330-600-0754**  
**Jr. Mast**



Orus Mast Auctions, LLC  
330-473-9077



BERKSHIRE HATHAWAY  
HomeServices  
Stouffer Realty

